

Map of Areas With Risk of Flooding Due to Overflow of the Kanda, Zenpukuji, and Myoshoji Rivers of the Arakawa River System (inundation duration)

1. About this map

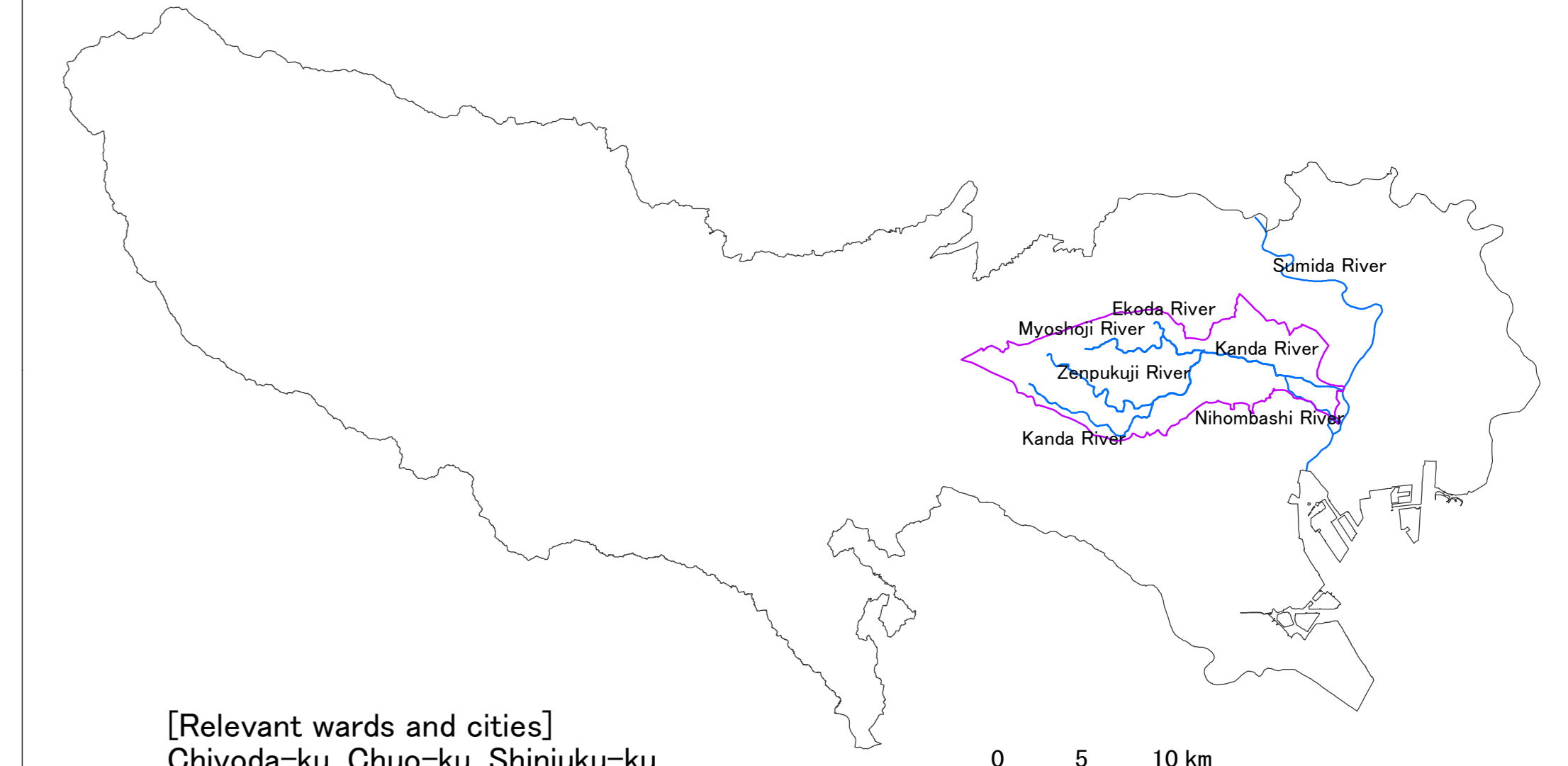
- Pursuant to the provisions of the Flood Control Act, this map shows the duration of inundation for the maximum assumed rainfall for sections subject to flood warnings and those subject to water-level notification of the Kanda, Zenpukuji, and Myoshoji rivers of the Arakawa River system.
- This river flood risk map shows the estimated duration of 50cm or deeper inundation that occurs due to overflow of the Kanda, Zenpukuji, and Myoshoji rivers resulting from the maximum assumed rainfall. The simulation is based on the situation of the river channels and flood control facilities as of the time of the map's publication.
- Because the simulation does not take into account flooding of tributaries or flooding caused by rainfall greater than the assumed level, by a storm surge, or by runoff of rainwater, the actual duration of inundation may differ from the estimates and inundation may also occur in areas not indicated on this map.

2. Basic information

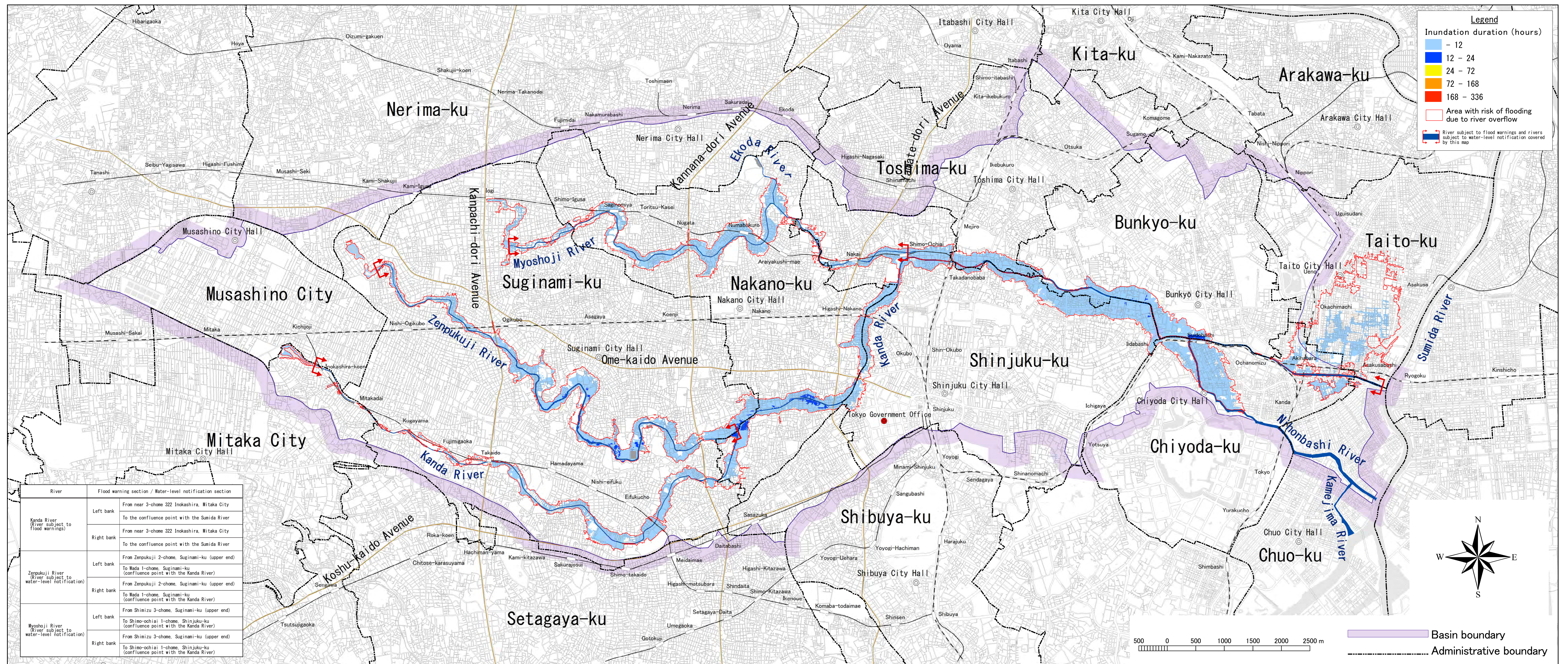
- Map created by the Tokyo Metropolitan Government
- Risk areas designated on March 30, 2018
- Released as TMG announcement No. 449
- Designation made based on Article 14, paragraph 1 of the Flood Control Act (Act No. 193 of 1949)
- River subject to flood warnings covered by this map
Kanda River of the Arakawa River system (The flood warning section is shown in the table below.)
- Rivers subject to water-level notification covered by this map
Zenpukuji River of the Arakawa River system (The water-level notification section is shown in the table below.)
Myoshoji River of the Arakawa River system (The water-level notification section is shown in the table below.)
- Assumed rainfall
Up to 153mm per hour and 690mm in 24 hours in the Kanda River basin

[Inquiries]
Disaster Prevention Section, River Division, Bureau of Construction, Tokyo Metropolitan Government
Main Phone: 03-5321-1111

Location map



[Relevant wards and cities]
Chiyoda-ku, Chuo-ku, Shinjuku-ku, Bunkyo-ku, Taito-ku, Shibuya-ku, Nakano-ku, Suginami-ku, Toshima-ku, Musashino City, Mitaka City



This map was created using a 1:2500 topographic map of Tokyo. (Approval number) 29-toshikou-464