

Flood Risk Map for the Shakuji River and Shirako River Basin (Revised)

This map uses the same set of colors as previous flood risk maps to indicate inundation depths.

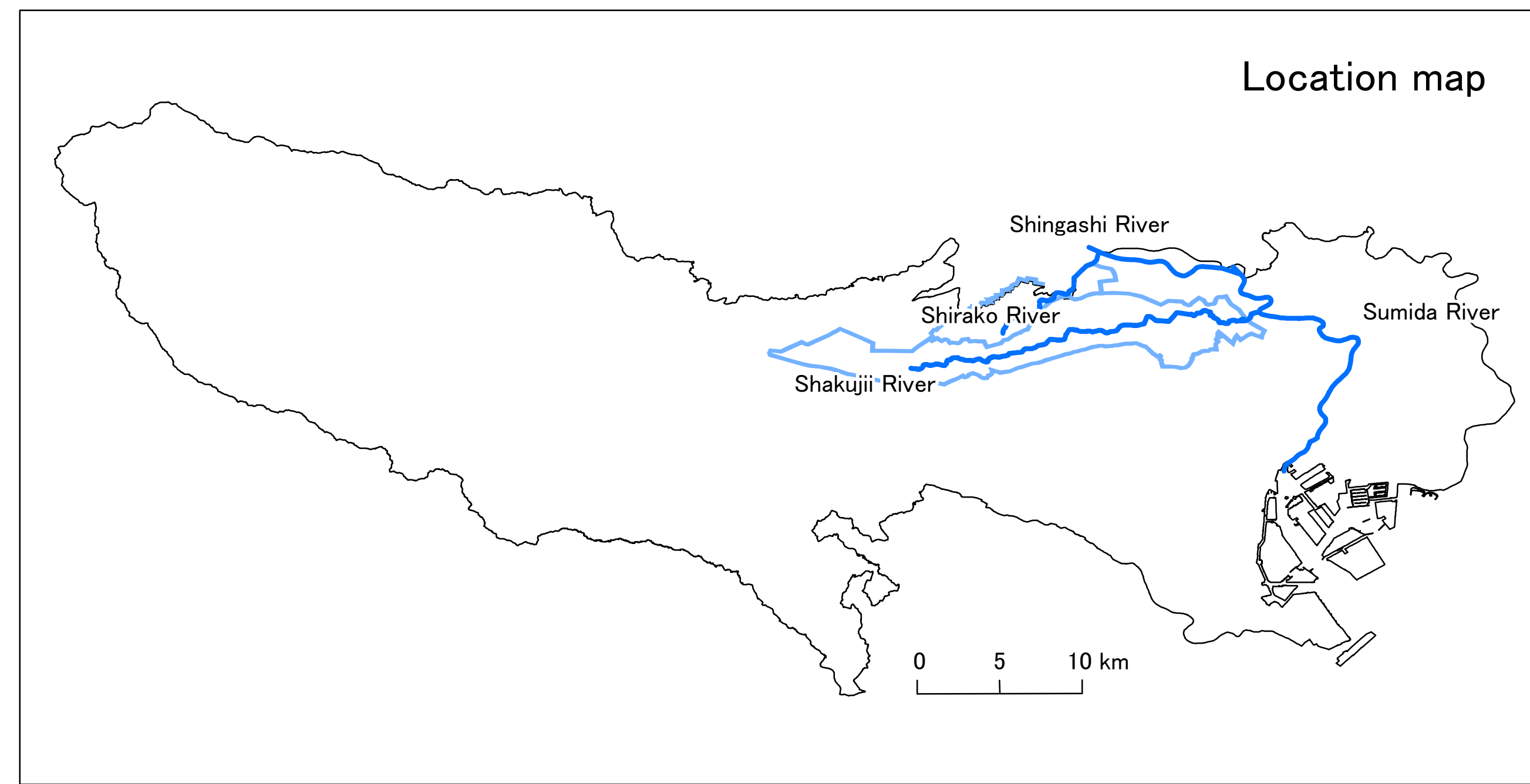
1. About this map

- (1) This map shows the areas expected to flood and anticipated depth of inundation in the event of heavy rain for the drainage basins of the Shakuji and Shirako rivers. The assumed rainfall used for previous flood risk maps was the September 2000 Tokai Region Heavy Rain Disaster, but for this revised edition, the maximum assumed rainfall was used.
- (2) By informing the public of the risk of flooding, we hope that knowledge will be applied in times of emergency to stay safe and evacuate, as well as to devise smarter life styles with respect to flood risk.
- (3) This flood risk map (revised) uses a simulation to show inundation expected should the maximum assumed rainfall occur in the covered areas. The simulation is based on the situation of the rivers and the sewerage system in the covered areas as of 2016.
- (4) The areas expected to flood and extent of inundation can vary depending on the intensity of rain, changes of the form of land, and improvements on rivers and the sewerage system.

2. Basic information

- (1) Map created by the Council for Protection Against Urban Flooding (Shakuji, Shirako Rivers basin)
- (2) Map created on May 23, 2019
- (3) Areas covered
Arakawa River system (Shakuji, Shirako rivers)
- (4) Assumed rainfall
Maximum assumed rainfall (Hourly rainfall: 153mm Total: 690mm)
- (5) Relevant wards and cities
Toshima-ku, Kita-ku, Itabashi City, Nerima-ku, Musashino City, Koganei City, Kodaira City, Nishi-Tokyo City

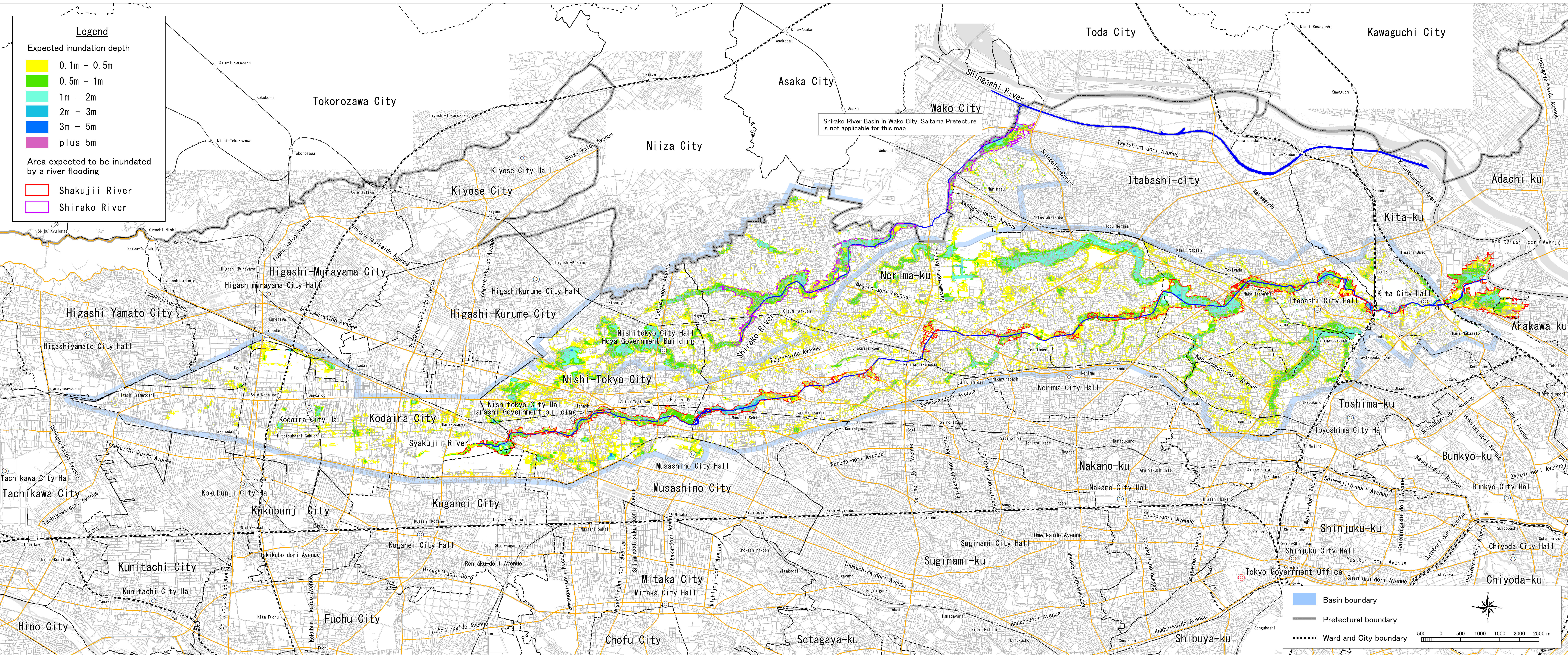
3. Notes
Most riverside areas are low-lying, so it should be noted that they can be inundated by deep water when the river floods. Also, areas some distance away from rivers can be inundated by deep water if they are low-lying. Please also note that the simulation does not consider infiltration inlets blocked by fallen leaves or other factors that could cause inundation.



[Inquiries]

Tokyo Metropolitan Government (Planning Section, River Division, Bureau of Construction)	03-5321-1111
Tokyo Metropolitan Government (Disaster Prevention Section, River Division, Bureau of Construction)	03-5321-1111
Tokyo Metropolitan Government (Planning Section, Planning and Coordination Division, Bureau of Sewerage)	03-5321-1111
Toshima-ku (General Affairs Division, Disaster Prevention and Crisis Management Section)	03-3981-1111
Kita-ku (Civil Engineering Division, Road and Park Section)	03-3908-1111
Arakawa-ku (Disaster Prevention Section, Civic Life Affairs Division)	03-3802-3111
Itabashi-city (Crisis Management Room, Disaster Prevention and Crisis Management Section)	03-3964-1111
Nerima-ku (Crisis Management Room, Crisis Management Section)	03-3993-1111
Musashino city (Disaster Prevention and Public Safety Department, Disaster Prevention Section)	0422-51-5131
Koganei city (General Affairs Department, Regional Safety Division)	042-383-1111
Kodaira city (The General Affairs Department, Disaster Prevention and Crisis Management Section)	042-341-1211
Nishitokyo city (Crisis Management Office, Disaster Prevention and Crime Prevention Section)	042-464-1311

Note: These are main phone numbers.



This map was created using a 1:2500 topographic map of Tokyo. (Approval number) 29-toshikou-552