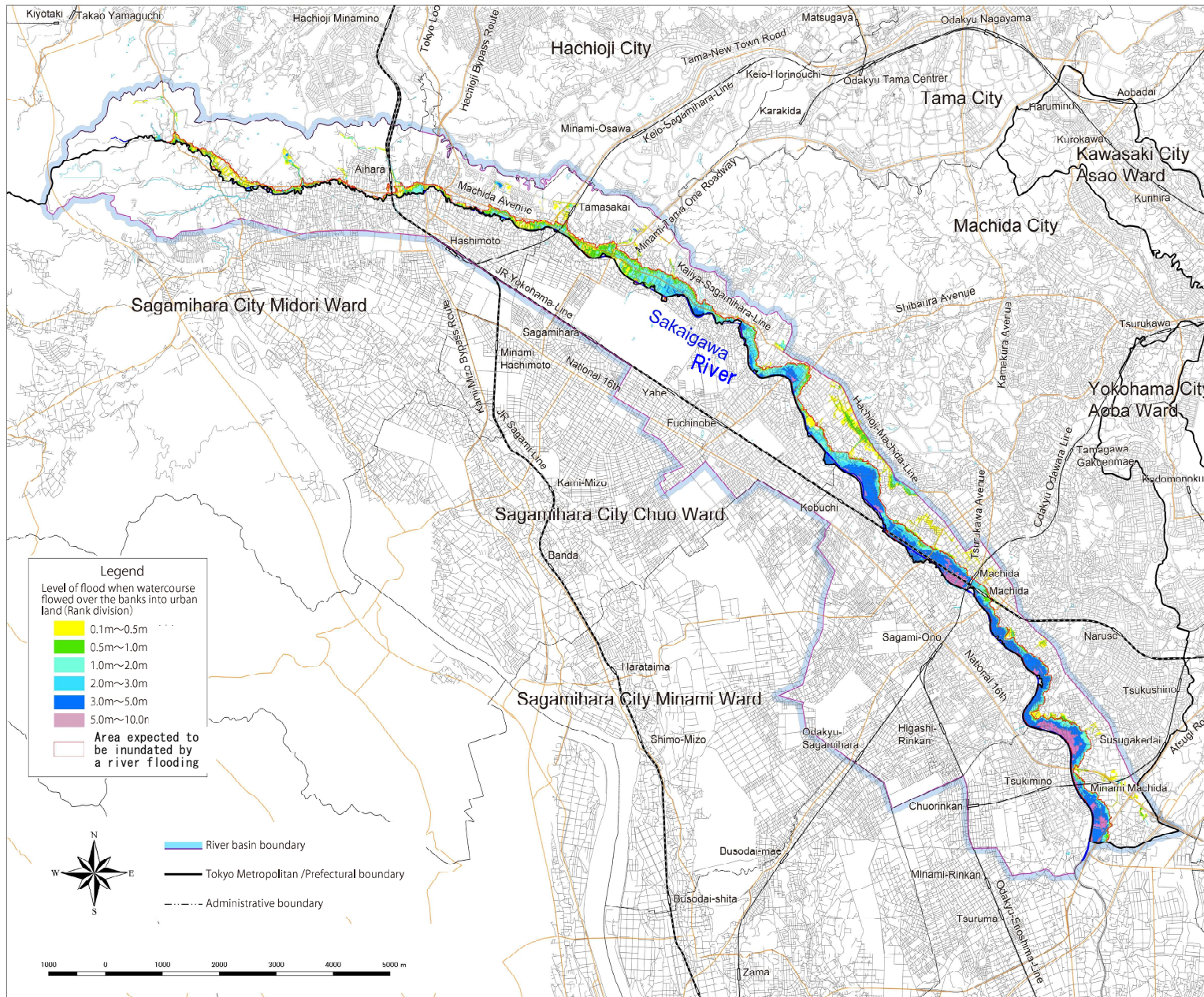


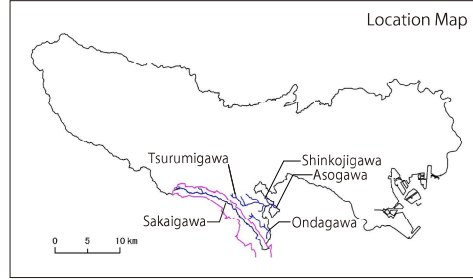
Flood Risk Map for the Sakai River Basin (Revised)



This map uses the same set of colors as previous flood risk maps to indicate inundation depths.

1. About this map
 - (1) This map shows the areas expected to flood and anticipated depth of inundation in the event of heavy rain for the drainage basins of the Sakai river. The assumed rainfall used for previous flood risk maps was the September 2000 Tokai Region Heavy Rain Disaster, but for this revised edition, the maximum assumed rainfall was used.
 - (2) By informing the public of the risk of flooding, we hope that knowledge will be applied in times of emergency to stay safe and evacuate, as well as to devise smarter life styles with respect to flood risk.
 - (3) This flood risk map (revised) uses a simulation to show inundation expected should the maximum assumed rainfall occur in the covered areas. The simulation is based on the situation of the rivers and the sewerage system in the covered areas as of 2016.
 - (4) The areas expected to flood and extent of inundation can vary depending on the intensity of rain, changes of the form of land, and improvements on rivers and the sewerage system.

2. Basic information
 - (1) Map created by the Council for Protection Against Urban Flooding (Sakai River basin)
 - (2) Map created on June 28, 2018
 - (3) Areas covered
 Drainage basin of the Sakai River (Upstream area of Tsuruse bridge)
 - (4) Assumed rainfall Maximum assumed rainfall
 - Hourly rainfall: 170mm
 - Total: 710mm (Upstream area of Tsuruse bridge) (across River basin in Sakai river : 632mm)
 - (5) Relevant wards and cities: Machida City
3. Notes
 Most riverside areas are low-lying, so it should be noted that they can be inundated by deep water when the river floods. Also, areas some distance away from rivers can be inundated by deep water if they are low-lying. Please also note that the simulation does not consider infiltration inlets blocked by fallen leaves or other factors that could cause inundation.



[Inquiries]
 Tokyo Metropolitan Government (Planning Section, River Division, Bureau of Construction) 03-5321-1111
 Tokyo Metropolitan Government (Disaster Prevention Section, River Division, Bureau of Construction) 03-5321-1111

Machida City Disaster Prevention and Safety Department Disaster Prevention Division ; 042(722)3111