

Flood Risk Map for Asakawa River, Ōguri River and Misawa River Basin (Revised)

This map mainly uses graduated colors to indicate inundation depths.

1. About this map

(1) This map shows the areas expected to flood and anticipated depth of inundation in the event of heavy rain for the drainage basins of the Asakawa River, Daigo River, Yamairi River, Ozu River, Shiroyama River, Ōsawa River, Goreiya River, Minami-Asakawa River, Annai River, Kawaguchi River, Yamada River, Yudono River, Hyōe River, Yaji River, Hodokubo River, Ōguri River, Ōta River, Kotta River, Misawa River. The assumed rainfall used for previous flood risk maps was the September 2000 Tokai Region Heavy Rain Disaster, but for this revised edition, the maximum assumed rainfall was used.

(2) By informing the public of the risk of flooding, we hope that knowledge will be applied in times of emergency to stay safe and evacuate, as well as to devise smarter life styles with respect to flood risk.

(3) This flood risk map (revised) uses a simulation to show inundation expected should the maximum assumed rainfall occur in the covered areas. The simulation is based on the situation of the rivers and the sewerage system in the covered areas as of 2016.

(4) The areas expected to flood and extent of inundation can vary depending on the intensity of rain, changes of the form of land, and improvements on rivers and the sewerage system.

2. Basic information

(1) Map created by the Council for Protection Against Urban Flooding (Asakawa Meadows, Ōguri River and Misawa River basin)

(2) Published on on January 30, 2020

(3) Areas covered :

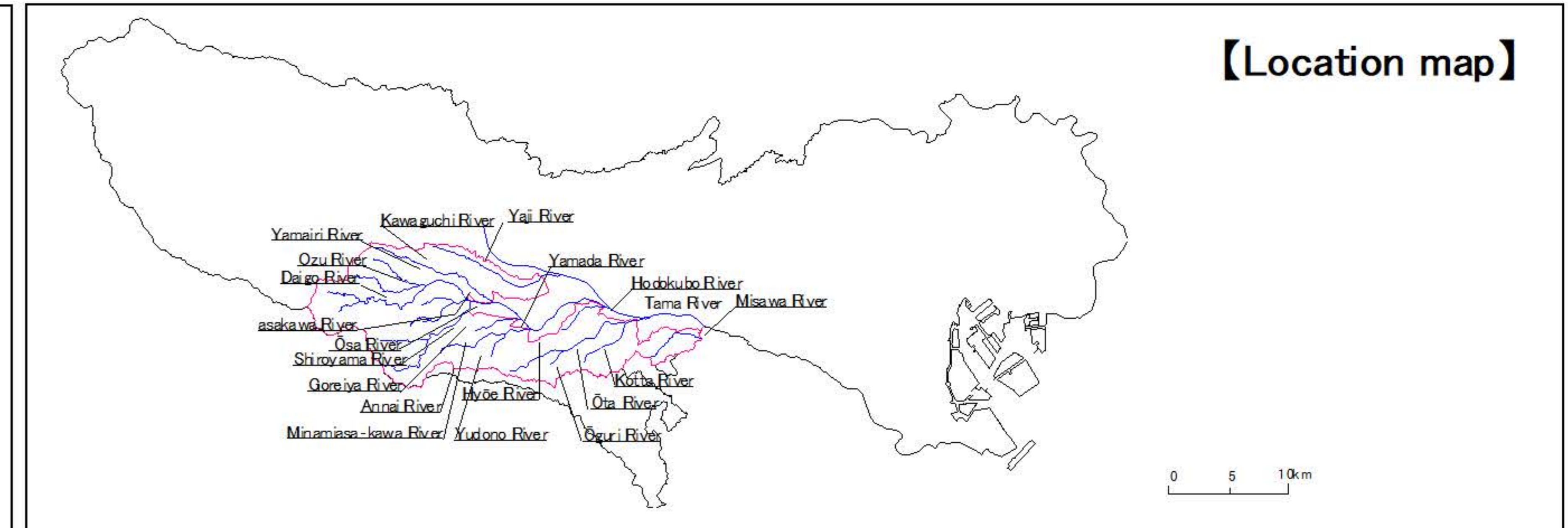
Asakawa Meadows (Asakawa River, Daigo River, Yamairi River, Ozu River, Shiroyama River, Ōsawa River, Goreiya River, Minami-Asakawa River, Annai River, Kawaguchi River, Yamada River, Yudono River, Hyōe River, Yaji River, Hodokubo River)
 Ōguri River basin (Ōguri River, Ōta River, Kotta River)
 Misawa River basin (Misawa River)

(4) Assumed rainfall Maximum assumed rainfall:

(Asakawa Meadows and Ōguri River basin Hourly maximum rainfall: 153mm
 Total amount of rainfall: 690mm)
 (Misawa River basin Hourly maximum rainfall: 152mm Total amount of rainfall: 690mm)

3. Notes

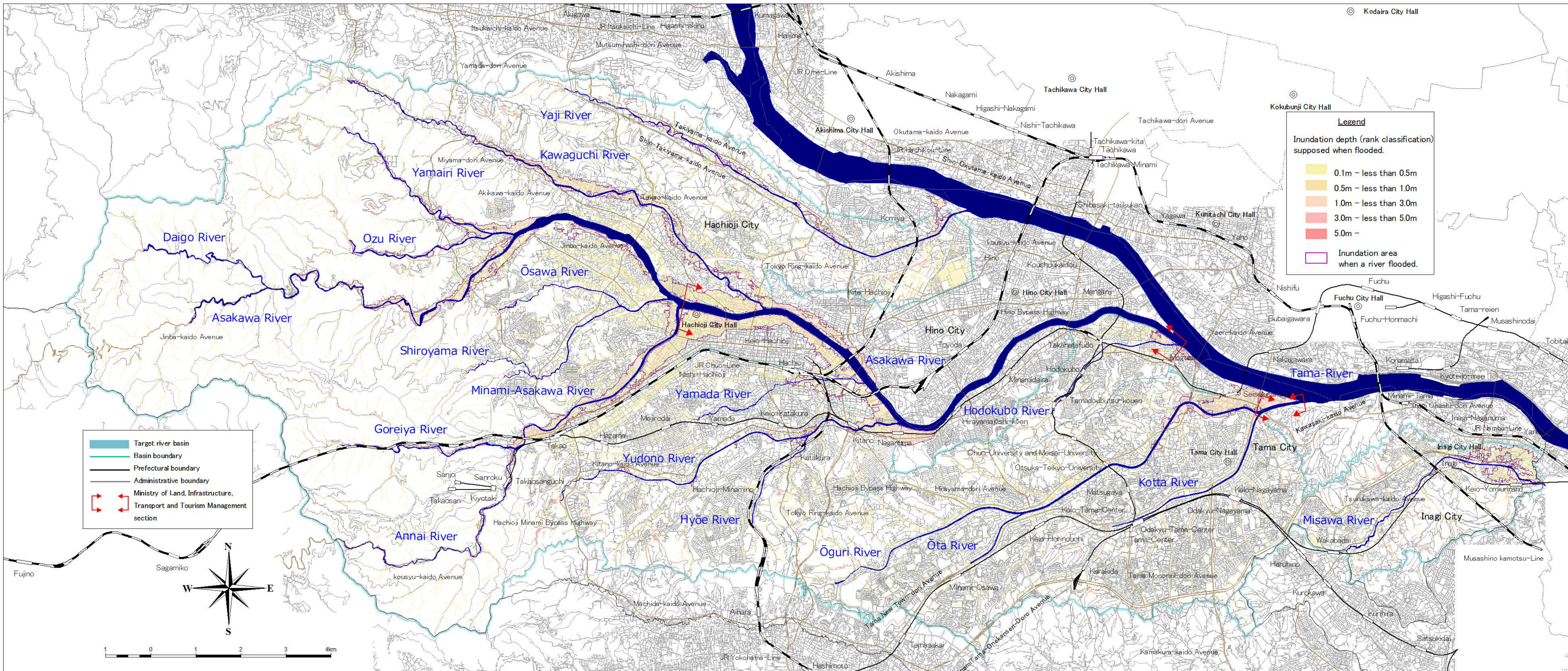
Most riverside areas are low-lying, so it should be noted that they can be inundated by deep water when the river floods. Also, areas some distance away from rivers can be inundated by deep water if they are low-lying. Please also note that the simulation does not consider infiltration inlets blocked by fallen leaves or other factors that could cause inundation.



【Inquiries】

Tokyo Metropolitan Government (Planning Section, River Division, Bureau of Construction)	03 (5321) 1111
Tokyo Metropolitan Government (Disaster Prevention Section, River Division, Bureau of Construction)	03 (5321) 1111
Hachioji City Disaster Prevention Division	042 (626) 3111
Machida City Disaster Prevention and Safety Division Disaster Prevention Section	042 (722) 3111
Hino City General Affairs Department Disaster Prevention and Safety Division	042 (585) 1111
Tama City Hall Affairs Department Disaster Prevention and Safety division	042 (375) 8111
Inagi City Fire Headquarters Disaster Prevention Division	042 (377) 7119

Note: These are main phone numbers.



Legend

Inundation depth (rank classification) supposed when flooded.

- 0.1m - less than 0.5m
- 0.5m - less than 1.0m
- 1.0m - less than 3.0m
- 3.0m - less than 5.0m
- 5.0m -

Inundation area when a river flooded.

- Target river basin
- Basin boundary
- Prefectural boundary
- Administrative boundary
- Ministry of Land, Infrastructure, Transport and Tourism Management section

