

Map of Areas with Risk of Building Collapse Due to River Overflow of Asakawa River, Ōguri River and Misawa River Basin

1. About this map

(1) This map shows the areas where flooding powerful enough to collapse buildings may occur for sections subject to flood warnings and those subject to water-level notification of the Daigo River, Yamairi River, Ozu River, Shiroyama River, Ōsawa River, Goreiya River, Minami-Asakawa River, Annai River, Kawaguchi River, Yamada River, Yudono River, Hyōe River, Yaji River, Hodokubo River, Ōguri River, Ōta River, Kotta River, Misawa River of the Asakawa River system.

(2) This river flood risk map uses a simulation to show inundation that can occur due to overflow of the Asakawa, Ōguri River and Misawa river resulting from the maximum assumed rainfall. The simulation is based on the situation of the river channels and flood control facilities as of the time of the map's publication.

(3) Because the simulation does not take into account flooding of tributaries or flooding caused by rainfall greater than the assumed level, by a storm surge, or by runoff of rainwater, buildings may collapse or be washed away in areas other than those designated on this river flood risk map.

(4) Calculations for this river flood risk map (building collapse due to overflow) were based on certain assumptions, including those listed in (3). Also, buildings were assumed to be standard wooden structures on spread foundation, and land along the rivers was assumed to be vacant with no buildings. Therefore, it should be noted that the risk area boundaries do not accurately delineate areas with and without risk and that the data should only be used as a guide.

2. Basic information

(1) Map created by the Tokyo Metropolitan Government

(2) Published on January 30, 2020

(3) River covered by this map

Asakawa Meadows (Asakawa River, Daigo River, Yamairi River, Ozu River, Shiroyama River, Ōsawa River, Goreiya River, Minami-Asakawa River, Annai River, Kawaguchi River, Yamada River, Yudono River, Hyōe River, Yaji River, Hodokubo River)
 Ōguri River basin (Ōguri River, Ōta River, Kotta River)
 Misawa River basin (Misawa River)

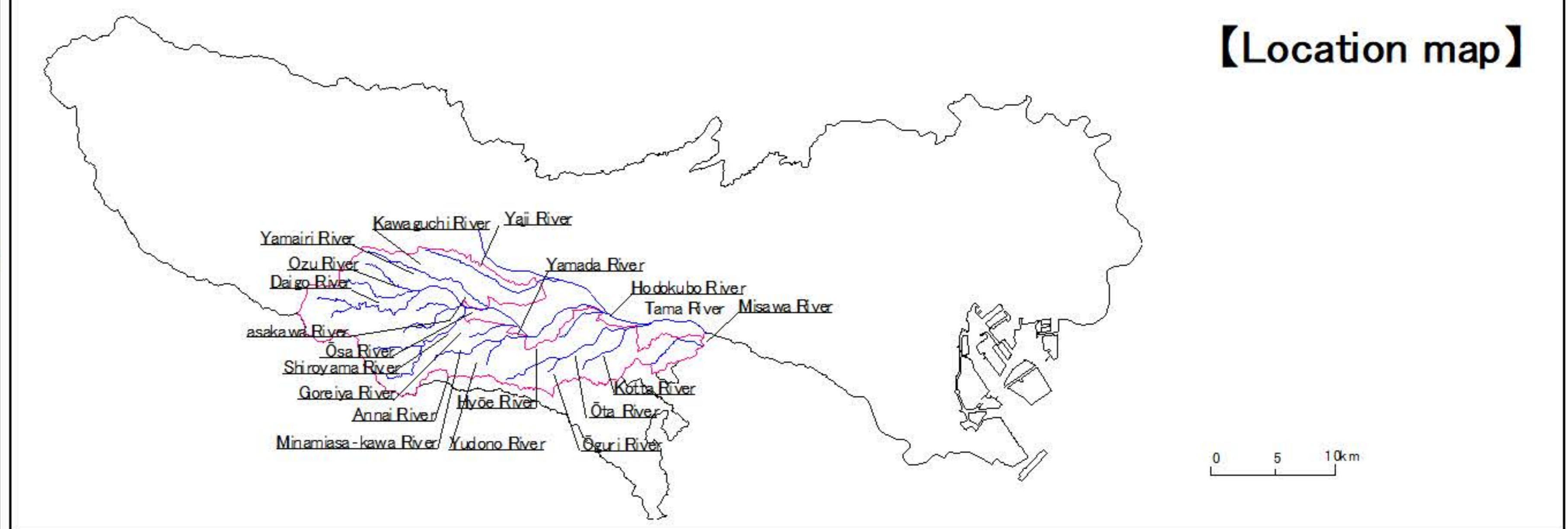
(4) Assumed rainfall Maximum assumed rainfall

(Asakawa Meadows and Ōguri River basin Hourly maximum rainfall: 153mm Total amount of rainfall: 690mm)
 (Misawa River basin Hourly maximum rainfall: 152mm Total amount of rainfall: 690mm)

(5) Relevant cities

Hachioji city

【Location map】

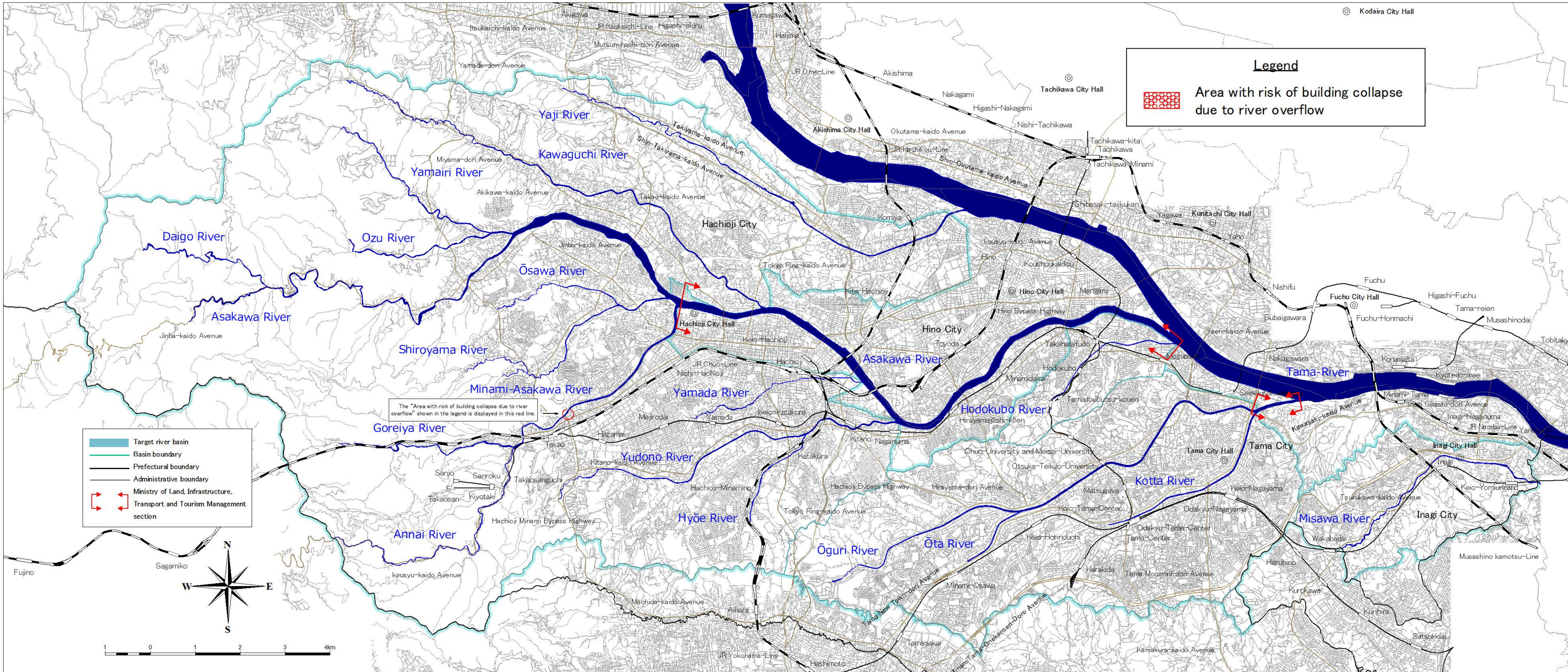


【Inquiries】

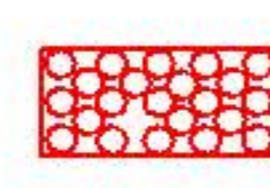
Tokyo Metropolitan Government (Planning Section, River Division, Bureau of Construction) 03 (5321) 1111

Tokyo Metropolitan Government (Disaster Prevention Section, River Division, Bureau of Construction) 03 (5321) 1111






Note: These are main phone numbers.



Legend

 Area with risk of building collapse due to river overflow

Legend for map symbols:

-  Target river basin
-  Basin boundary
-  Prefectural boundary
-  Administrative boundary
-  Ministry of Land, Infrastructure, Transport and Tourism Management section